

# HMI

## Centralised Visibility of Multiple Controllers

See gas concentration, alarms, fault and location details from a single screen

Retrofit and new installations

6 Vortex or 10 Gasmaster from one screen

User defined detector locations

Alarm and event logging

Gas test capability



# HMI Centralised Visibility of Multiple Controllers

Minimise the time operators spend in hazardous areas.

HMI is a Human Machine Interface which offers remote monitoring of up to 6 Vortex (72 detectors) or up to 10 Gasmaster Controllers (40 detectors) from one panel. HMI delivers advantages aimed at improving service, maintenance and system visibility for existing or new installations.

HMI employs license activated software which can be operated from a dedicated panel.

## Capability

Monitor up to 6 Vortex panels or 10 Gasmasters

Simultaneous display showing:

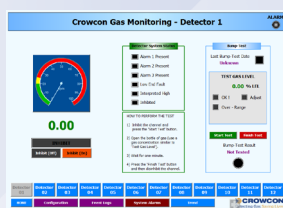
- Gas concentration and name
- Inhibit status
- Sensor integrity
- Detector settings and location

Enhanced functionality:

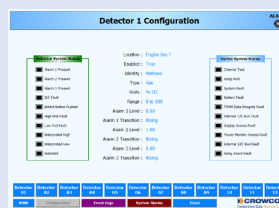
- Alarm log
- Over-exposure registration
- Event log and reporting
- Password access restrictions
- Response testing



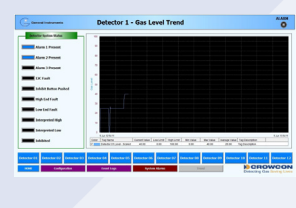
Home screen



Detector screen



Configuration screen



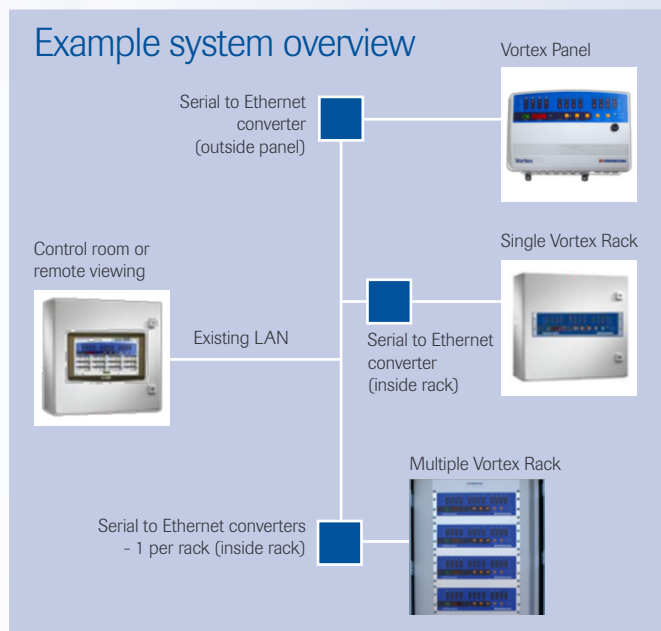
Trend screen

## System configuration

The system offers enhanced flexibility and reduces the cost of installation by allowing connection via existing networks, or through the use of the RS485 output.

## Touch Screen Panel PC Specification\*

The Crowcon HMI software can be supplied installed onto the touchscreen panel PC, including wall mount cabinet, ethernet converters and UPS.



Screen size	15" (1024 x 768)
Processor	Intel BayTrail-M N2930 / Quad Core 1.83GHz
System memory	4G DDR3 RAM
Touchscreen	Resistive
HDD	128GB m-SATA (FLASH Hard Drive)
Graphics	Intel HD
Video I/O	1 x DVI Output
Audio	1 x audio line output
OS	Windows 10 IoT Enterprise
I/O	1 x Ethernet, 4 x USB, 2 x RS-232C, 1 x RS232C/RS485/RS422
Front panel	Water-resistant Front Panel (IP65)
Power	24W (2A@DC12V)
Operating humidity	10 to 85% RH @40°C (non-condensing)
Operating temperature	0°C to 60°C
Storage temperature	20°C to 70°C

\* Specification subject to change without notice

### Disclaimer

Every effort has been made to ensure the accuracy of this document at the time of printing. In accordance with the company's policy of continued product improvement Crowcon Detection Instruments Limited reserves the right to make product changes without notice. The products are routinely subject to a programme of testing which may result in some changes in the characteristics quoted. Technical information contained in this document or otherwise provided by Crowcon are based upon records, tests, or experience that the company believes to be reliable, but the accuracy, completeness, and representative nature of such information is not guaranteed.

Many factors beyond Crowcon Detection Instruments' control and uniquely within user's knowledge and control can affect the use and performance of a Crowcon product in a particular application.

As the products may be used by the client in circumstances beyond the knowledge and control of Crowcon Detection Instruments Limited, we cannot determine the relevance of these to an individual customer's application. It is the clients' sole responsibility to carry out the necessary tests to evaluate the usefulness of the products and review all applicable regulations and standards to ensure their safety of operation in a particular application.